

DENTAL  
PRODUCTS  
2026

DENTAL  
PRODUCTS  
2026

VOLDENT

VOLDENT

v o l d e n t - m e d i c a l . c o m

**VOLDENT**

VOLDENT MED-TECH  
voldent-medical.com

Voldent Medical Technology Co., Ltd.  
1st Floor, Building 4, Plot D-04-2a, Information Industrial Park,  
QixingDistrict, Guilin, 541004, P.R.China  
+86-773-6751115  
voldent.china@hotmail.com

VOLDENT

Powder Jet



## **Powder Jet Handpiece**

Simple and Efficient Plaque Control Solution

# ProJet

## Simple and Efficient Plaque Control Solution



**Unique Periodontal nozzle**  
The precise little cannula for periodontal pockets

The narrow plastic periodontal sandblasting nozzle for focused gentle periodontal treatment as well as cleaning gaps, bridges, implants and crowns.

### 0.7mm powder outlet

Exceptional cleaning and concentrated jet

Less powder mist thanks to the highly precise power jet. The narrow shape of the cannula provides concentrated sandblasting during supragingival cleaning.

### Enhanced visibility

Thin and long nozzle, pre-mixed powder and water

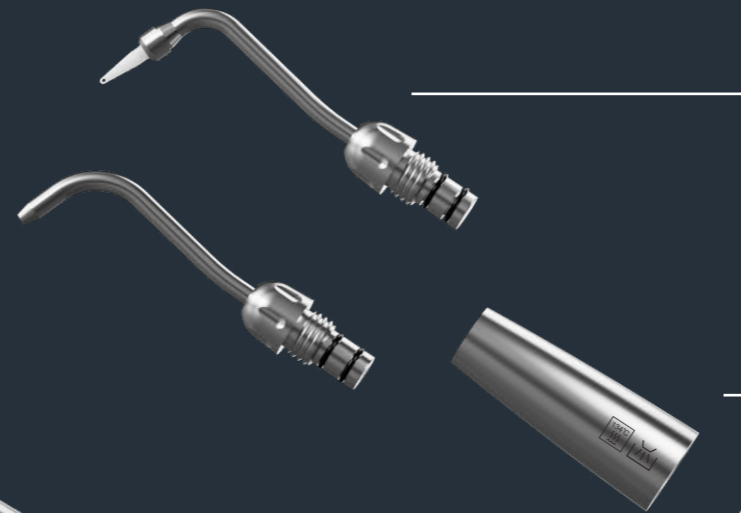
Work comfortable even in difficult-to-reach places, thanks to the thin and long nozzle which is 360° rotatable. The powder and water are pre-mixed before spraying, minimizes blowing powder.

### Stay relaxed, handle with easy

A super light, perfectly balanced handpiece with individually adjustable lengths for comfortable handling and stress-free treatment.

### 3 power levels of adjustment

Three power levels adjustment, with the first level for powerless cleaning of the teeth to remove powder residue. Level 2 and 3 are for individually adjustable cleaning performances depending on the patient and indication.



### 3-Section fuselage design

Segmented handpiece minimizes the risk of clogging. This is the easiest sandblasting handpiece to unclog and clean.

### Simple filling and safety storage

A second powder container for interruption-free treatment, the powder container can be filled in advance and sealed with a rubber seal which shows the indication.

### Easy quick coupling

Can fit with both Kavo Multiflex LED and no-LED quick coupling.



# ProJet

## Simple and Efficient Plaque Control Solution

The new VOLDENT ProJet 2 meets all the needs of daily prophylaxis treatment. It's suitable for working in subgingival or supragingival regions, gaps, bridges, implants and crowns. It's feather-light, perfectly balanced and ergonomically designed for comfortable working.



### ProJet 2

- 3 sandblasting modes adjustable
- Equipped with 2 sandblasting handpiece PJ-02 (supragingival) & PJ-01 (periodontal)
- KAVO MULTiflex / MILTiflex LED quick connector



### ProJet 1P

- Equipped with PJ-01 supragingival sandblasting handpiece
- KAVO MULTiflex / MILTiflex LED quick connector



### ProJet 1

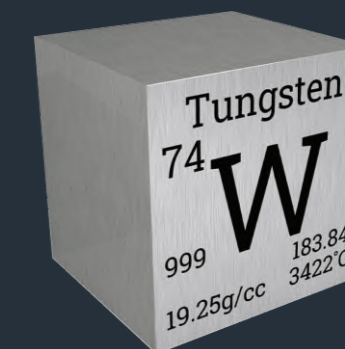
- Equipped with PJ-01 supragingival sandblasting handpiece
- 4-holes connector



NEW

# ProJet 360

Efficient and precise  
Air hydro abrasion mini sandblaster



### Ultra hard tungsten nozzle

Unmatched wear resistance for extreme abrasion

10x longer lifespan than standard steel or ceramic nozzles, resisting erosion from abrasive media. Maintains optimal blasting performance with minimal wear, ensuring uniform surface treatment.

### 0.6mm powder outlet

Exceptional and concentrated

Highly precise sandblasting, narrow shape of the cannula provides concentrated sandblasting during using. High-speed air flow (20 m/sec) for faster abrasion and noticeable time savings for treatments.

### Cleaner usage environment

Thin and long nozzle, pre-mixed powder and water

Less powder mist, air abrasion or mini sandblaster system and water spray for reduced powder mist.

### Easy quick coupling

Can fit with both Kavo Multiflex LED and no-LED quick coupling.

### 3-Section fuselage design

Segmented handpiece minimizes the risk of clogging. This is the easiest sandblasting handpiece to unclog and clean.

### Simple filling and safety storage

A second powder container for interruption-free treatment, the powder container can be filled in advance and sealed with a rubber seal which shows the indication.



**VOLDENT**

# ProJet 360

## Efficient and precise Air hydro abrasion mini sandblaster

ProJet 360 provides you an efficient, convenient and precise hydro system within abrasion and the gentle and virtually painless surface treatment to pretreat dentine, metal or ceramic surfaces or before applying adhesive systems and composite-based cements.



### ProJet 360P

- Equipped with PJ-05 sandblasting handpiece and 2 pcs of tungsten steel nozzles
- KAVO MULTiflex / MILTiflex LED quick connector



### ProJet 360

- Equipped with PJ-05 sandblasting handpiece and 2 pcs of tungsten steel nozzles
- 4-holes connector

## Aluminum Oxide Sandblasting Powder

Achieve flawless surface preparation with our premium Aluminum Oxide Sandblasting Powder – engineered for superior dental restoration and cleaning.

### High Purity

99.6% alumina ensures contamination-free abrasion.

### Optimal Particle Size

Uniform grit for consistent etching, bonding, and stain removal.

### Non-Toxic & Biocompatible

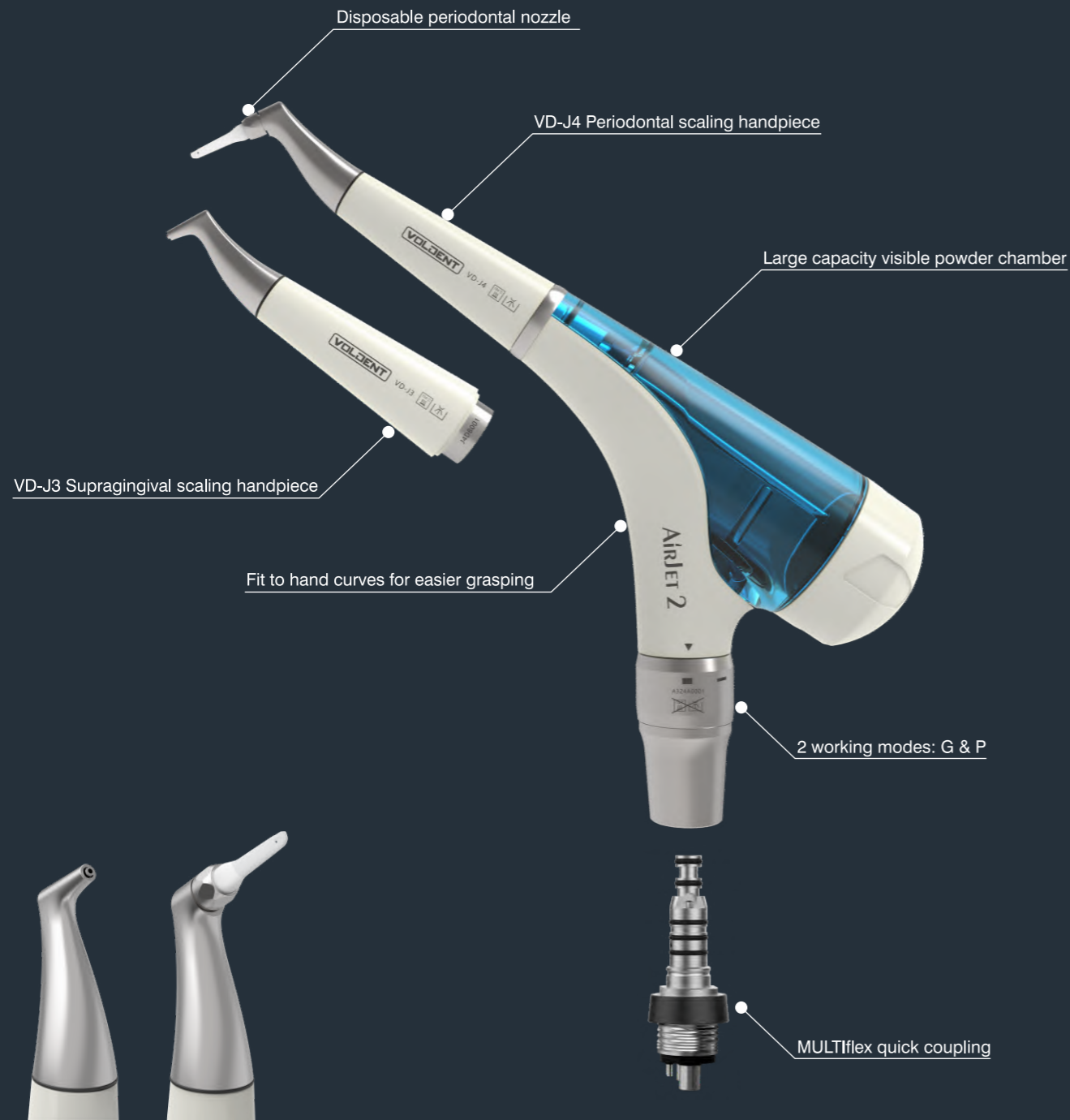
Safe for intraoral and lab use.

### Versatile Applications

Ideal for crown prep, implant cleaning, and orthodontic bonding.



	Ultra-Fine	Fine-Medium	Medium-Coarse
<b>Best for</b>	Subtle adhesion prep without substrate damage	Balanced efficiency and surface preservation	Heavy-duty tasks, ultra-smooth finish
<b>Specification</b>	300g	300g	300g
<b>Particle Size</b>	30µm	50µm	90µm
<b>Application</b>	<ul style="list-style-type: none"> <li>Minimally invasive enamel etching e.g., veneer bonding, orthodontic brackets</li> <li>Gentle stain/pellicle removal</li> <li>Surface activation for zirconia or composite repairs</li> <li>Finishing touches on ceramic/composite restorations</li> </ul>	<ul style="list-style-type: none"> <li>Standard tooth preparation for crowns, inlays, and composite bonding</li> <li>Moderate stain/oxide removal for titanium implants, old cement residues</li> <li>Cleaning dentures/acrylics without visible scratching</li> <li>Lab use: Pre-sintered zirconia surface treatment</li> </ul>	<ul style="list-style-type: none"> <li>Aggressive cleaning of thick oxides or stubborn debris on implants</li> <li>Macro-retention creation in metal/ceramic crown preparation</li> <li>Removing old composite or damaged coatings</li> <li>Lab use: Rapid gross surface roughening</li> </ul>



# AIRJET

An ideal all-rounder

Voldent AirJet 2 is equipped with 2 sandblasting handpiece: VD-J3 (supragingival) and VD-J4 (periodontal), which help you to remove the dental plaque, soft deposits, tartar and stains on the surface of nature teeth, interproximal surface, periodontal area, restorations, implants and orthodontic brackets, so as to prevent periodontal disease.

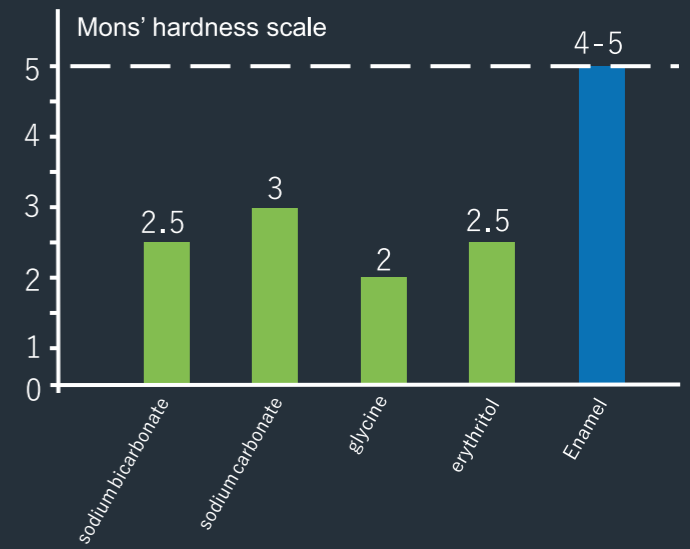
# AIRJET

## Optimal Comfort Minimally Invasive Maximally Preventive

AirJet uses smaller and lower hardness sandblasting powder, which can protect teeth to the greatest extent during treatment and has high comfort.

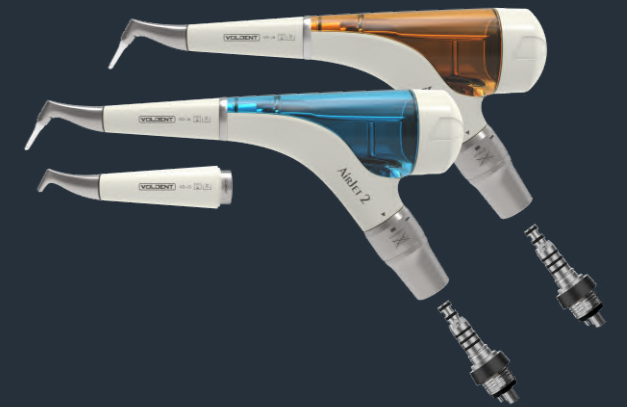
### Recommended Prophylaxis Powder:

Supragingival scaling:  
Sodium Bicarbonate, Glycine, Erythritol  
with particle size less than 65µm  
Periodontal and Gap scaling:  
Glycine, Erythritol  
with particle size less than 25µm



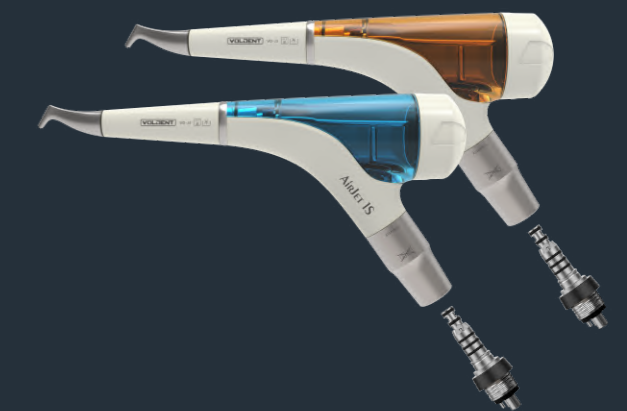
## AirJet 2

- 2 sandblasting modes adjustable: G & P
- Equipped with 2 sandblasting handpiece VD-J3 (supragingival) & VD-J4 (periodontal)
- KAVO MULTIflex quick connector



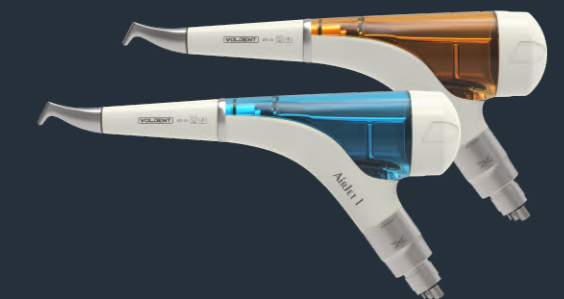
## AirJet 1S

- Equipped with VD-J3 supragingival sandblasting handpiece
- KAVO MULTIflex quick connector



## AirJet 1

- Equipped with VD-J3 supragingival sandblasting handpiece
- 4-holes connector



**VOLDENT**

# What can we do?

Full range of clinic applications



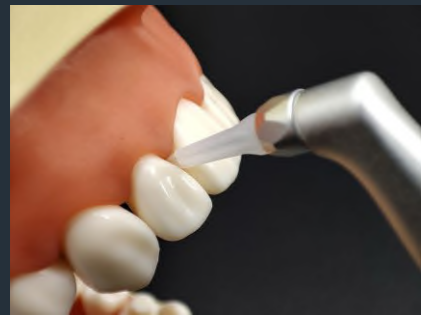
Supragingival scaling  
Apply for:



Supragingival scaling  
Apply for:



Periodontal scaling (<3mm)  
Apply for:



Interproximal surface scaling  
Apply for:



Implant and abutment scaling  
Apply for:



Orthodontic brackets scaling  
Apply for:



## Concentrated, consistent sandblasting Stable, continuous cleaning effect

AirJet's unique nozzle design makes sandblasting more concentrated, and can easily handle areas that are not easy to clean, such as occlusal surfaces, gap spaces, orthodontic brackets, etc. It can also polish the tooth surface during the scaling treatment, so that plaque and pigment are not easy to reattach.



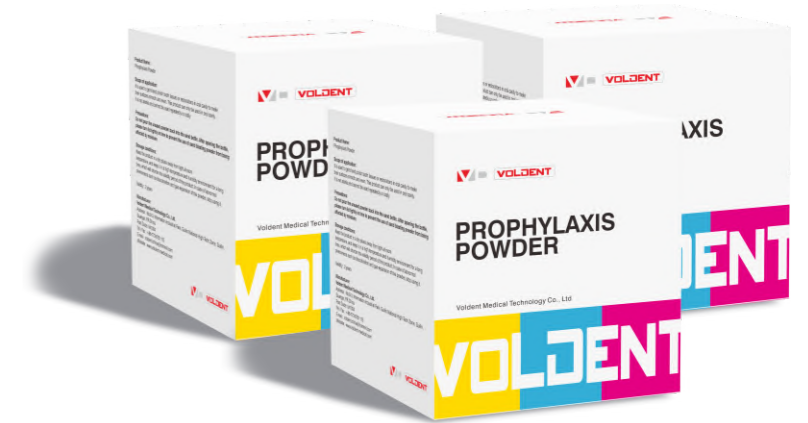
# Prophylaxis Powder

Low hardness ingredients, reducing the possibility of damage of soft tissue  
Fine particles are not easy to dissolve, not easy to block  
Suitable for enamel and soft tissue  
Anti-inflammatory raw materials, efficient and fast cleaning  
Antibacterial and anti-carries ingredients, more peace of mind

Optimal Comfort

Minimally Invasive

Maximally Preventive



	PT-X1	PT-X3	PT-X5	PT-X6	PT-X7
<b>Component</b>	Sodium Bicarbonate Sodium Carbonate Silicon dioxide	Glycine Silicon Dioxide	Erythritol Silicon Dioxide	Glycine Silicon Dioxide	Erythritol Silicon Dioxide
<b>Specification</b>	300g	200g	200g	120g	120g
<b>Particle Size</b>	65µm	65µm	65µm	25µm	14µm
<b>pH</b>	-8.1	-6	-8.1	-6	-7
<b>Application</b>	<ul style="list-style-type: none"> <li>Supragingival</li> <li>Orthodontic Bracket</li> <li>Porcelain Denture</li> <li>Adhesive Material Removal</li> </ul>	<ul style="list-style-type: none"> <li>Supragingival</li> <li>Orthodontic Bracket</li> <li>Porcelain Denture</li> <li>Metal Alloy Denture</li> <li>Hybrid Composite</li> <li>Implant &amp; Abutment</li> </ul>	<ul style="list-style-type: none"> <li>Supragingival</li> <li>Orthodontic Bracket</li> <li>Porcelain Denture</li> <li>Metal Alloy Denture</li> <li>Implant &amp; Abutment</li> </ul>	<ul style="list-style-type: none"> <li>Periodontal</li> <li>Interproximal</li> <li>Orthodontic Bracket</li> <li>Porcelain Denture</li> <li>Metal Alloy Denture</li> <li>Hybrid Composite</li> <li>Implant &amp; Abutment</li> </ul>	<ul style="list-style-type: none"> <li>Periodontal</li> <li>Interproximal</li> <li>Orthodontic Bracket</li> <li>Porcelain Denture</li> <li>Metal Alloy Denture</li> <li>Hybrid Composite</li> <li>Implant &amp; Abutment</li> </ul>

# TURBO

## TURBO 3

## TURBO 5

High Speed Turbine Handpiece

### Clean Head System

An anti-suck back mechanism stops blood and foreign matter from entering the head from the oral cavity.

### Multiple Head Size

Three different sized heads for a variety of tooth angle and depth

### Push Button Chuck

Auto-chuck mechanism tightens the bur grip during rotation. It allows one-touch insertion and removal without tools.

### 4 Nozzle Spray

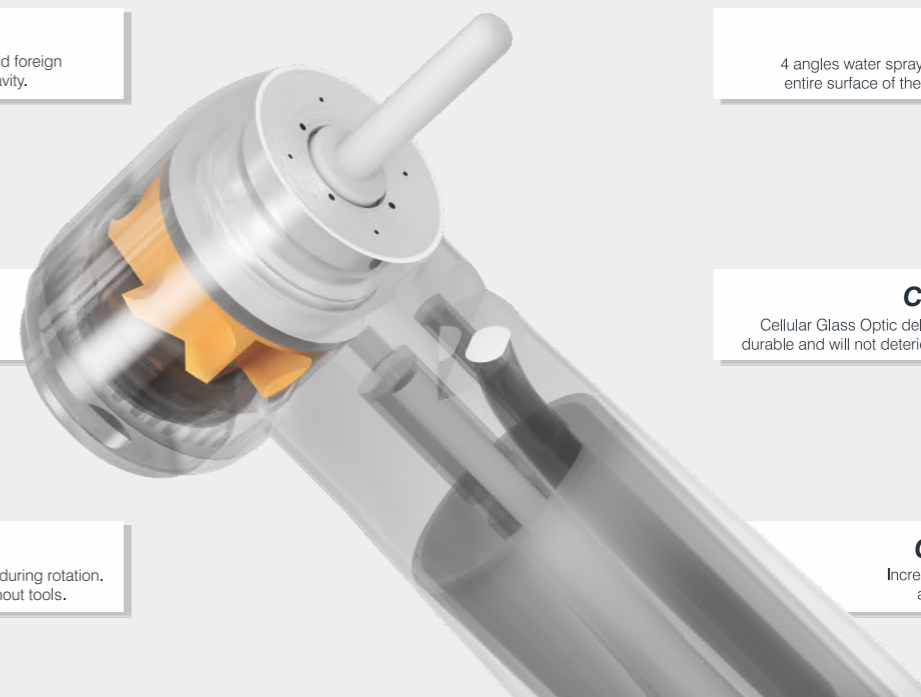
4 angles water spray provides superior cooling on the entire surface of the bur, leaving no areas uncovered.

### Cellular Glass Optic

Cellular Glass Optic delivers brilliant illumination, is highly durable and will not deteriorate due to repeated sterilization.

### Chromium Coating

Increasing user comfort and friction for anti-skid and anti-scratch purpose



## TURBO 5

BEARINGS MADE IN GERMANY



VOLDENT Turbo 5 high speed turbines come with Germany original Myonic bearings. With the excellent wear resistance, hardness, contact fatigue strength and impact toughness, and the precision cartridge of Voldent, Turbo 5 has more powerful cutting performance and longer service life.



**VOLDENT**

## Turbo 5 Titanium Series

Titanium body  
Durable coating  
Clean head system  
Zero suction back  
Quick stop

Fiber Optic illumination  
Germany Myonic bearings  
Quattro cooling spray  
Kavo MULTIflex connector  
Anti reflux

POWER COMFORT DURABILITY



**T5-PMQ Ti**  
Fiber Optic

- Titanium body & durable coating
- Germany Myonic ceramic bearings inside
- Mini head • Head size:  $\Phi 9.0 \times H11.0\text{mm}$
- Quattro spray • Clean head system
- Quick Stop • Zero suction back

**T5-PQ Ti**  
Fiber Optic

- Titanium body & durable coating
- Germany Myonic ceramic bearings inside
- Standard head • Head size:  $\Phi 11.2 \times H13.7\text{mm}$
- Quattro spray • Clean head system
- Quick Stop • Zero suction back

**T5-PTQ Ti**  
Fiber Optic

- Titanium body & durable coating
- Germany Myonic ceramic bearings inside
- Big torque head • Head size:  $\Phi 12.5 \times H13.4\text{mm}$
- Quattro spray • Clean head system
- Quick Stop • Zero suction back

**T5-PCQ Ti**  
Fiber Optic

- Titanium body & durable coating
- Germany Myonic ceramic bearings inside
- 45° angle head • Head size:  $\Phi 10.8 \times H12.2\text{mm}$
- Quattro spray • Clean head system
- Quick Stop • Zero suction back

## Titanium

The metal of choice for medical instrument

Stronger, lighter, Durability, Biocompatibility,  
Non-ferromagnetic Property

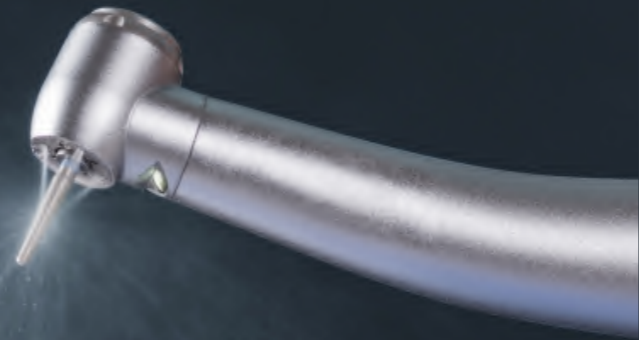


**TURBO 5 Titanium**

**VOLDENT**

## Turbo 5 Series

Fiber Optic light illumination  
 Germany Myonic bearings inside  
 Push button type  
 4 points cooling water spray  
 4 points air spray, anti reflux  
 Voldent e-generator quick connector  
 or Kavo MULTIflex quick connector



**T5-PQ**  
standard head

**T5-PTQ**  
big torque head

**T5-PCQ**  
45°head

## T5 Self-Lighting Series

E-generator inside, self-lighting  
 Germany Myonic bearings inside  
 Push button type  
 3 points cooling water spray  
 3 points air spray, anti reflux



**T5-PM**  
Mini head

**T5-P**  
standard head

**T5-PT**  
big torque head

**T5-PC**  
45°head

**NEW**

# Turbo 3 Plus Series

3 points water spray  
3 points air spray, anti reflux  
Multiple head size available



**T3-PT+**  
push-button  
big torque head

**T3-P+**  
push-button  
standard head



**QC-KV05**  
Kavo MULTIflex quick connector  
4 holes, e-generator inside



**QC-KV04**  
Kavo MULTIflex quick connector  
6 holes, water regulating

## Quick Coupling

# Turbo 3 Series

3 points air spray, anti reflux  
Multiple head size available



**T3-P**  
push-button  
standard head

**T3-PT**  
push-button  
big torque head

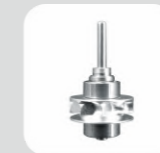
**T3-PM**  
push-button  
mini head

**T3-PC**  
push-button  
45° head

## Cartridges



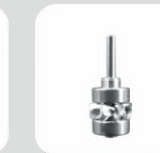
**RT-P3**  
For T5-PQ Ti  
Push-button  
Germany bearings



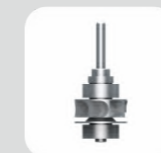
**RT-PT3**  
For T5-PTQ Ti  
Push-button  
Germany bearings



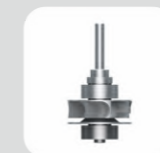
**RT-PC3**  
For T5-PCQ Ti  
Push-button  
Germany bearings



**RT-PM3**  
For T5-PMQ Ti  
Push-button  
Germany bearings



**RT-P2**  
For T5-PQ  
Push-button  
Germany bearings



**RT-PT2**  
For T5-PTQ  
Push-button  
Germany bearings



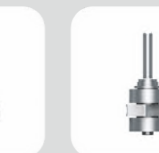
**RT-PC2**  
For T5-PCQ  
Push-button  
Germany bearings



**RT-P**  
For T3-P, T3-PC  
Standard head  
Push-button



**RT-PT**  
For T3-PT  
Big torque head  
Push-button



**RT-PM**  
For T3-PM  
Mini head  
Push-button



# Contra Angle Handpiece

## Contra Angle Handpiece



### Updated internal body design

The all new internal design makes it even more durable, and it can withstand repeated autoclave sterilization and the hostile environment of thermo-disinfection.

### Clean Head System

The Clean Head System has an anti-suck back mechanism that stops blood and foreign matter from entering the head from the oral cavity. As a result, the ball bearings and mechanical parts last longer.

### A new chuck mechanism provides even greater holding strength

The bur holding chuck mechanism has been updated further improving operator and patient safety. And because it's easy to use, you can totally focus on the treatment.

### Push Button Chuck

The bur is released easily with the responsive and tactile push button.

### Ceramic bearings

The ceramic bearings are 25% harder than steel and around half the weight, meaning very little wear, which helps the cartridge to last longer.

### All stainless body

The handpiece body is stainless steel, making it rust-proof and sturdy. Its satin-like finish fits comfortably in your hand.

### Slimmer shape

The grip has been made slimmer in response to requests for a design that avoids contact with the front teeth when accessing molars.

### Quattro spray

Sprays more effectively over the entire bur for better cooling.

# CONTRA ANGLE HANDPIECE



## CA0105L **Fiber Optic**

- Gear Ratio: 1:5 increasing
- Internal water channel
- Max speed: 200,000rpm
- 4 points water spray
- Fiber optic
- Push button chuck
- For FG burs ( $\phi$ 1.60)
- Clean head system



## CA0101L **Fiber Optic**

- Gear Ratio: 1:1 direct drive
- Internal water channel
- Max speed: 40,000rpm
- Single water spray
- Fiber optic
- Push button chuck
- For CA burs ( $\phi$ 2.35)
- Clean head system



## CA0105

- Gear Ratio: 1:5 increasing
- Internal water channel
- Max speed: 200,000rpm
- 4 points water spray
- Push button chuck
- For FG burs ( $\phi$ 1.60)
- Clean head system



## CA0101

- Gear Ratio: 1:1 direct drive
- Internal water channel
- Max speed: 40,000rpm
- Single water spray
- Push button chuck
- For CA burs ( $\phi$ 2.35)
- Clean head system



## CA0142L **Fiber Optic**

- Gear Ratio: 1:4.2 increasing
- Internal water channel
- Max speed: 168,000rpm
- 4 points water spray
- Fiber optic
- Push button chuck
- For FG burs ( $\phi$ 1.60)
- Clean head system



## CA0101-EX

- Gear Ratio: 1:1 direct drive
- External water channel
- Max speed: 40,000rpm
- Single water spray
- Push button chuck
- For CA burs ( $\phi$ 2.35)
- Clean head system



## CA0401L **Fiber Optic**

- Gear Ratio: 4:1 reduction
- Internal water channel
- Max speed: 10,000rpm
- Single water spray
- Fiber optic
- Push button chuck
- For CA burs ( $\phi$ 2.35)
- Clean head system



## CA1601-EX

- Gear Ratio: 16:1 reduction
- External water channel
- Max speed: 2500rpm
- Single water spray
- Push button chuck
- For Endo file burs ( $\phi$ 2.35)
- Clean head system



## CA1601L **Fiber Optic**

- Gear Ratio: 16:1 reduction
- Internal water channel
- Max speed: 2,500rpm
- Single water spray
- Push button chuck
- For CA burs ( $\phi$ 2.35)
- Clean head system



## CA0401-PH

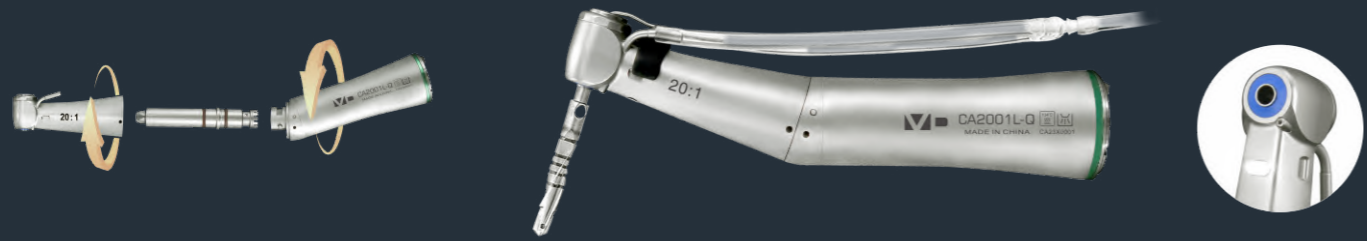
- Gear Ratio: 4:1 reduction
- External water spray
- Max speed: 5000rpm
- For screw-in cups and brushes
- 360° Rotation
- Paste Defense System

**NEW**

**NEW**

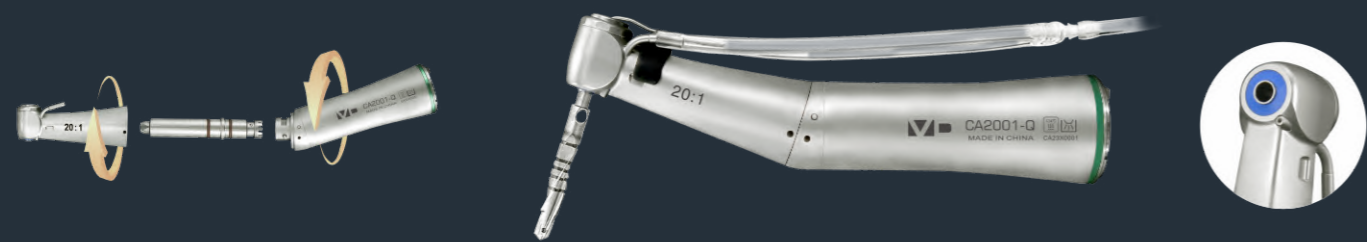
# Contra Angle Handpiece

## IMPLANT CONTRA ANGLE HANDPIECE



**CA2001L-Q** **Fiber Optic** **Quick Dismantable**

- Gear Ratio: 20:1 reduction
- Max speed: 2,000rpm
- Fiber optic
- Max torque: 80 Ncm
- External and internal water channel
- Push button chuck



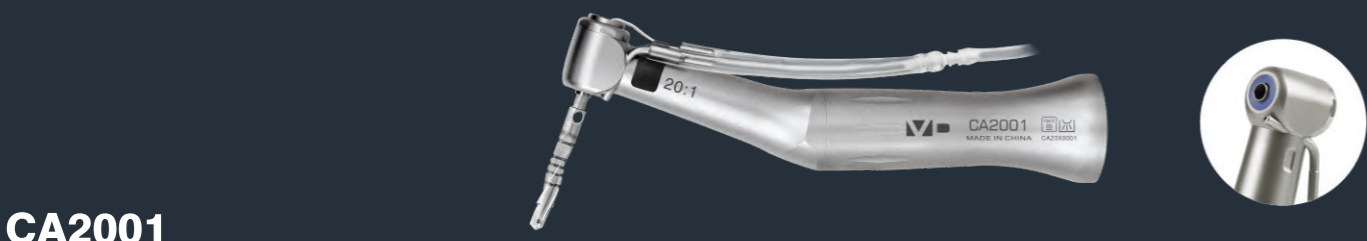
**CA2001-Q** **Quick Dismantable**

- Gear Ratio: 20:1 reduction
- Max speed: 2,000rpm
- External and internal water channel
- Max torque: 80 Ncm
- Push button chuck



**CA2001L** **Fiber Optic**

- Gear Ratio: 20:1 reduction
- Max speed: 2,000rpm
- Fiber optic
- Max torque: 80 Ncm
- External and internal water channel
- Push button chuck



**CA2001**

- Gear Ratio: 20:1 reduction
- Max speed: 2,000rpm
- External and internal water channel
- Max torque: 80 Ncm
- Push button chuck



**NEW**  
**CA2001L-K** **Fiber Optic**

- Gear Ratio: 20:1 reduction
- Max speed: 2,000rpm
- Fiber optic
- Max torque: 80 Ncm
- External and internal water channel
- Push button chuck

## SURGICAL CONTRA ANGLE HANDPIECE



**CA0105L-EX** **Fiber Optic**

- Gear Ratio: 1:5 increasing
- External water channel
- Max speed: 200,000rpm
- Clean head system
- Fiber optic lighting
- Push button chuck
- For FG burs (φ1.60)



**CA0142L-EX** **Fiber Optic**

- Gear Ratio: 1:4.2 increasing
- External water channel
- Max speed: 200,000rpm
- Clean head system
- Fiber optic lighting
- Push button chuck
- For FG burs (φ1.60)



**CA0101L-EX** **Fiber Optic**

- Gear Ratio: 1:1 direct drive
- External water channel
- Max speed: 200,000rpm
- Clean head system
- Fiber optic lighting
- Push button chuck
- For FG burs (φ1.60)



**SH200-EX** **Fiber Optic**

- Gear Ratio: 1:1 direct drive
- External water channel
- Max speed: 40,000rpm
- Clean head system
- Fiber optic lighting
- For HP burs (φ2.35)



**SH100-EX**

- Gear Ratio: 1:1 direct drive
- External water channel
- Max speed: 40,000rpm
- Clean head system
- For HP burs (φ2.35)

# Contra Angle Handpiece

## MICRO SURGERY HANDPIECE

Suitable for use in various surgical procedures, including implantology, orthopedics, otolaryngology, maxillary sinus lift, external osteotomy, and bone grinding.



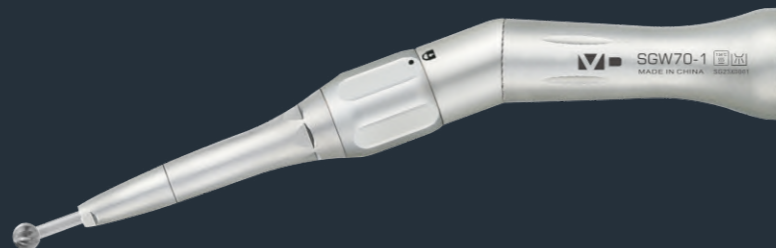
### SGZ70-1

- Gear Ratio: 1:1 direct drive
- Twist chuck
- 0° angle straight handpiece
- Max speed: 40,000rpm
- For surgical bur ( $\phi$ 2.35), (70mm)



### SGZ70-2

- Gear Ratio: 1:2 increasing
- Twist chuck
- 0° angle straight handpiece
- Max speed: 40,000rpm
- For surgical bur ( $\phi$ 2.35), (70mm)



### SGW70-1

- Gear Ratio: 1:1 direct drive
- Twist chuck
- 20° angle straight handpiece
- Max speed: 40,000rpm
- For surgical bur ( $\phi$ 2.35), (70mm)



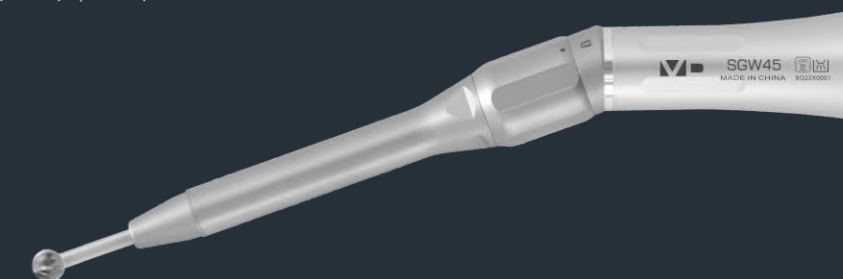
### SGW70-2

- Gear Ratio: 1:2 increasing
- Twist chuck
- 20° angle straight handpiece
- Max speed: 40,000rpm
- For surgical bur ( $\phi$ 2.35), (70mm)



### SGZ45

- Gear Ratio: 1:1 direct drive
- Twist chuck
- 0° angle straight handpiece
- Max speed: 40,000rpm
- For surgical bur ( $\phi$ 2.35), (45mm)



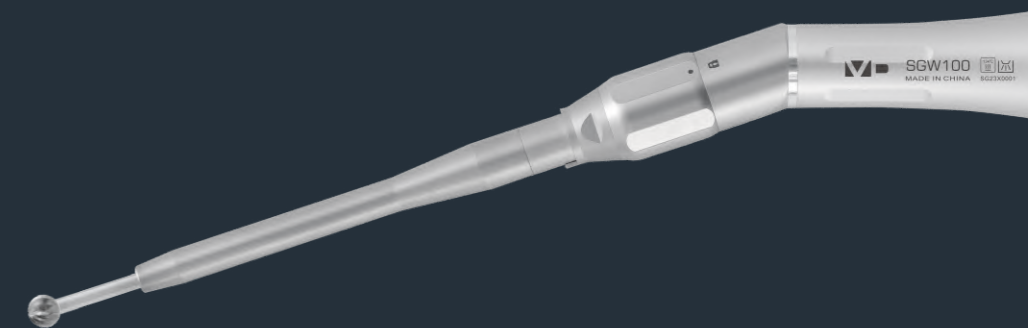
### SGW45

- Gear Ratio: 1:1 direct drive
- Twist chuck
- 20° angle straight handpiece
- Max speed: 40,000rpm
- For surgical bur ( $\phi$ 2.35), (45mm)



### SGZ100

- Gear Ratio: 1:1 increasing
- Twist chuck
- 0° angle straight handpiece
- Max speed: 40,000rpm
- For surgical bur ( $\phi$ 2.35), (100mm)



### SGW100

- Gear Ratio: 1:1 increasing
- Twist chuck
- 20° angle straight handpiece
- Max speed: 40,000rpm
- For surgical bur ( $\phi$ 2.35), (100mm)

# Micro Saw Handpiece

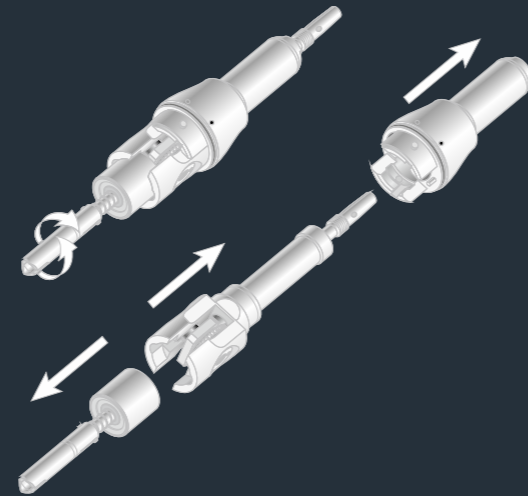
Suitable for bone cutting surgery in orthopedics, otolaryngology, ophthalmology and veterinary use.

## Powerful, consistent and stable cutting force output

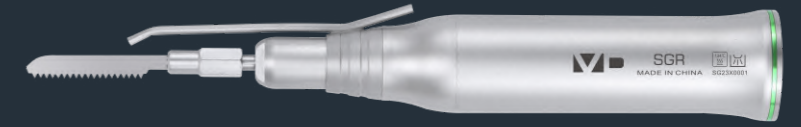
Voldent saw handpiece generates ideal cutting force to meet the needs of osteotomy or bone removal with sagittal, oscillating or reciprocating movement.

## Quick Dismantable Design

Voldent saw handpieces are designed to be quick dismantable for simple and precise cleaning, so as to achieve a longer lifetime.

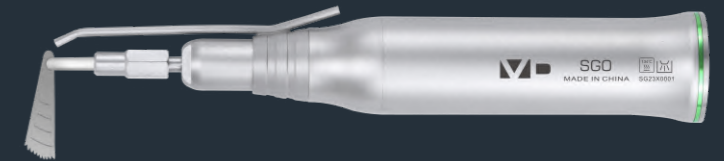


**VOLDENT**



### SGR **Quick Dismantable**

- Gear Ratio: 3.25:1 reduction
- Strokes / angles: 1.8mm reciprocating
- Frequency: 12,300/min
- Max drive speed: 40,000rpm



### SGO **Quick Dismantable**

- Gear Ratio: 3.4:1 reduction
- Strokes / angles: 12°
- Frequency: 11,800/min
- Max drive speed: 40,000rpm



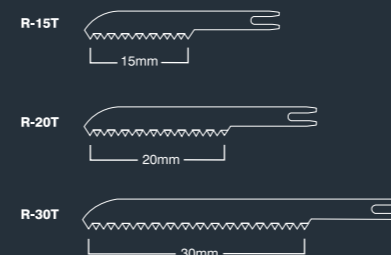
### SGT **Quick Dismantable**

- Gear Ratio: 3.25:1 reduction
- Strokes / angles: 12°
- Frequency: 12,300/min
- Max drive speed: 40,000rpm

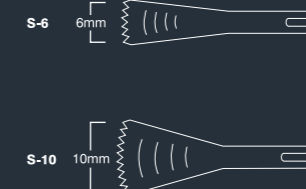
## Saw Blades



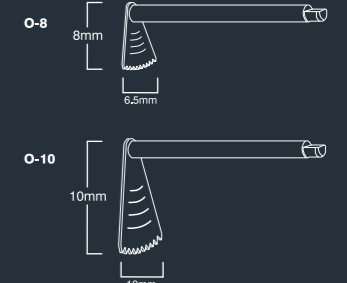
Reciprocating Saw Blades



Sagittal Saw Blades



Oscillating Saw Blades



# Contra Angle Handpiece

## STRAIGHT HANDPIECE

## AIR MOTOR



### SH200 **Fiber Optic**

- Gear Ratio: 1:1 direct drive
- Internal water channel
- Max speed: 40,000rpm
- Single water spray
- Fiber optic
- For HP burs ( $\phi 2.35$ )
- For CA burs ( $\phi 2.35$ )
- Clean head system



### SH100

- Gear Ratio: 1:1 direct drive
- Internal water channel
- Max speed: 40,000rpm
- Single water spray
- For HP burs ( $\phi 2.35$ )
- For CA burs ( $\phi 2.35$ )
- Clean head system



### SH101

- Gear Ratio: 1:1 direct drive
- External water channel
- Max speed: 40,000rpm
- For HP burs ( $\phi 2.35$ )
- Clean head system



### SH102

- Gear Ratio: 1:1 direct drive
- External water channel
- Max speed: 40,000rpm
- For HP burs ( $\phi 2.35$ )
- Clean head system

**NEW**



### SH401

- Gear Ratio: 4:1 reduction
- External water channel
- Max speed: 10,000rpm
- For HP burs ( $\phi 2.35$ )
- Clean head system



### AM200 **LED**

- Max speed: 22,000 rpm  $\pm 10\%$
- LED illumination, 32,000 LUX
- Internal water channel



### AM201 **LED**

- Max speed: 22,000 rpm  $\pm 10\%$
- Self-generating LED, 25,000 LUX
- Internal water channel



### AM100

- Max speed: 22,000 rpm  $\pm 10\%$  (M4)
- Max speed: 25,000 rpm  $\pm 10\%$  (B2)
- Internal water channel
- Midwest 4 hole / Borden 2 hole



### AM101

- Max speed: 22,000 rpm  $\pm 10\%$  (M4)
- Max speed: 25,000 rpm  $\pm 10\%$  (B2)
- EXternal water channel
- Midwest 4 hole / Borden 2 hole



### AM102

- Max speed: 22,000 rpm  $\pm 10\%$  (M4)
- Max speed: 25,000 rpm  $\pm 10\%$  (B2)
- EXternal water channel
- Midwest 4 hole / Borden 2 hole

**VOLDENT**

# Ultrasonic Scaler

## Ultra Intelligent The new Piezo Scaler

With Voldent infinitely variable power regulation and intelligent frequency tracking program, you can use Voldent piezo scaler in full range of clinic applications with particular tips. From prophylaxis and periodontology to implant maintenance or endodontics right up to the micro-preparation of restorations, the whole new Voldent piezo scaler offers you a variety of efficient solutions.

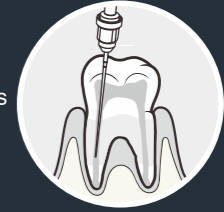
Supragingival  
Scaling



Subgingival  
Scaling



Endodontics



Implant Maintain



Cavity Preparation



**FULL  
RANGE  
USE**



# DENTAL

## TYPE 2

- **LED** Detachable handpiece, autoclavable
- 3 working modes:
  - G – supragingival scaling,
  - P – periodontal scaling,
  - E – endo irrigation
- 600ml water tank
- Automatic water supply
- Equipped with 5 tips: G1 G1 G2 G4 P1



## TYPE 1L

- **LED** Detachable handpiece, autoclavable
- 3 working modes:
  - G – supragingival scaling,
  - P – periodontal scaling,
  - E – endo irrigation
- Equipped with 5 tips: G1 G1 G2 G4 P1



## TYPE 1

- Detachable handpiece, autoclavable
- 3 working modes:
  - G – supragingival scaling,
  - P – periodontal scaling,
  - E – endo irrigation
- Equipped with 5 tips: G1 G1 G2 G4 P1



## Extensive Inserts Advanced Ultrasonic Technology

### Core Ultrasonic Vibration Technologies

With more than 10 years of research on piezoelectric ceramic ultrasonic vibration technology, Voldent scalers outputs the ideal vibration trace, presents you the whole new efficient and comfortable scaling experience.



## Built-in Solutions

Choose Voldent built-in scalers sets to be an integrated drive solution of your dental unit as part of the complete system. They can be controlled simply and conveniently via your dental unit.

### VN 2

- Detachable handpiece, autoclavable
- Working modes:
  - G – supragingival scaling,
  - P – periodontal scaling



### VN 3

- **LED** Detachable handpiece, autoclavable
- Working modes:
  - G – supragingival scaling,
  - P – periodontal scaling



**VOLDENT**

# Ultrasonic Scaler

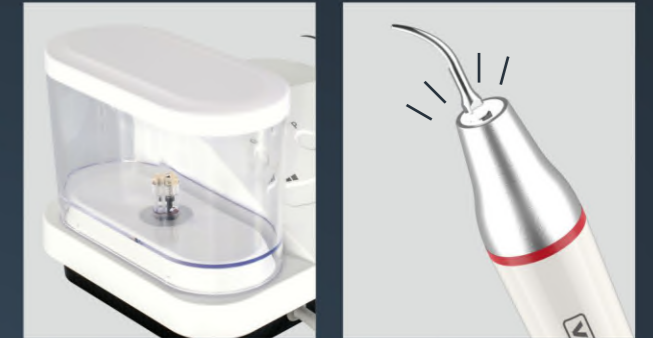
**MP7+**



## Smart Scaling Reliable Performance

### Automatic Water Supply System

Built-in 600ml large-capacity water tank  
Stable water flow with low-noise operation



### Detachable LED Handpiece

Autoclavable handpiece with bright LED illumination

### Smart Touch Control

Highly responsive touch panel for fast operation  
Waterproof surface design for safer and more reliable use



### Three Working Modes

G – Supragingival Scaling  
P – Periodontal Scaling  
E – Endodontic Irrigation

### Five Standard Tips Included

G1 / G2 / G4 / P1 / E1

Designed for supragingival scaling, periodontal treatment, and endodontic irrigation, meeting essential clinical needs

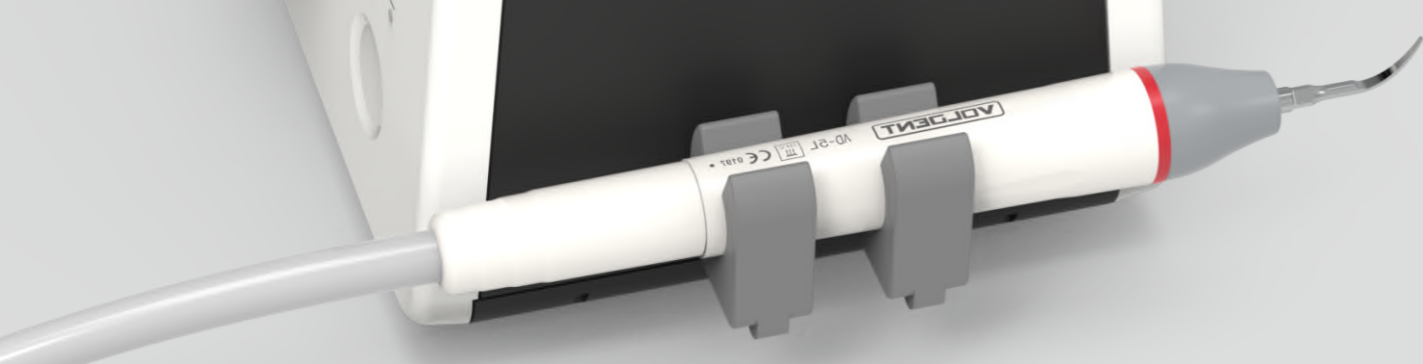


## Specification

Dimensions (mm)	215*155*210 mm
Main unit weight	1.83kg
Rated Input	220VAC 50Hz/ 120VAC 60Hz
Power Input	38VA
Function	G, P, E
Tip vibration frequency	28kHz+5kHz
Primary tip vibration excursion	<90um
Half-excursion force	0.5N~2N
Output power of tip	3W~20W

### Standard Configuration:

Main Unit×1, Handpiece HP-5L×1,  
Scaling Tips ×5 (G1, G2, G4, P1, E1),  
Endo file 20#×1 25#×1, Torque Wrench ×1



## Scaler Handpiece



**VD-3H**

Detachable handpiece, autoclavable, fits with VOLDENT & EMS & WOODPECKER



VOLDENT EMS<sup>®</sup> WOODPECKER<sup>®</sup>



**VD-3H-E**

Detachable handpiece, autoclavable, fits with VOLDENT & EMS & WOODPECKER



**NEW**

VOLDENT EMS<sup>®</sup> WOODPECKER<sup>®</sup>



**VD-5L**

LED Detachable handpiece, autoclavable, fits with VOLDENT & EMS & WOODPECKER



VOLDENT EMS<sup>®</sup> WOODPECKER<sup>®</sup>



**VD-7H**

Detachable handpiece, autoclavable, fits with SATELEC & DTE



Satelec<sup>®</sup> DTE<sup>®</sup>



**VD-7L**

LED Detachable handpiece, autoclavable, fits with SATELEC & DTE



Satelec<sup>®</sup> DTE<sup>®</sup>



**HY-1L**

LED Detachable Periodontal Handpiece, autoclavable, fits with VOLDENT & EMS & WOODPECKER



**NEW**

VOLDENT EMS<sup>®</sup> WOODPECKER<sup>®</sup>

## Scaler Cable



**CB-3H**

Scaler cable for VD-3H handpiece



**CB-5L**

Scaler cable for VD-5L handpiece



**CB-7H**

Scaler cable for VD-7H handpiece



**CB-7L**

Scaler cable for VD-7L handpiece



**CB-1L**

Scaler cable for HY-1L handpiece

## Wrench & Tip Stand



**TW-1L**

Torque wrench, autoclavable, fits with VOLDENT, EMS, WOODPECKER, NSK, SATELEC, DTE



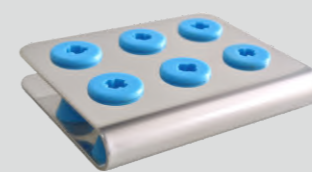
**TK-1L**

Torque wrench, autoclavable, fits with KAVO

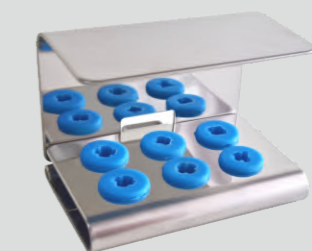


**TS-1L**

Torque wrench, autoclavable, fits with SIRONA



**1# Tip Stand**



**2# Tip Stand**



**3# Tip Stand**



**TW-E1**



**TW-E2**

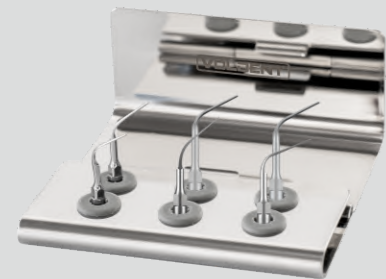
# Ultrasonic Scaler Tips

Precisely designed to meet diverse clinical needs, covering supragingival, subgingival, periodontal, and endodontic applications.



Universal Scaling Kit

G1 G1 G2 G4 G4 P1



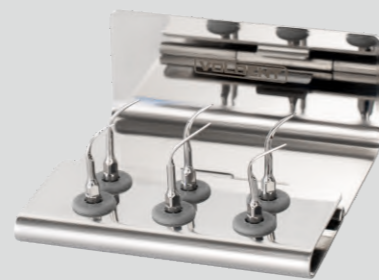
Universal Perio Kit

P3 P3L P3R P5 P6 P10



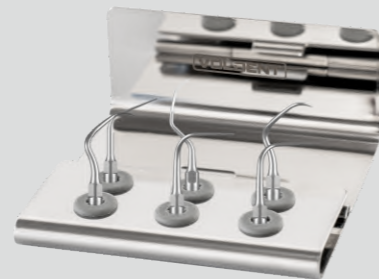
Titanium Perio Kit

P50LT P50RT P52T P53LT P53RT P59T



Hi-efficiency Scaling Kit

G4 G5 G6 P1 P3 P5



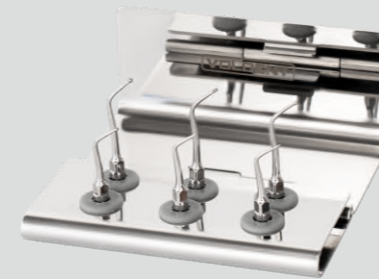
Advanced Perio Kit

P10 P12 P14L P14R P22L P22R



Implant Maintenance Kit

P94 P95 P96L P96R



Cavity Preparation Kit

SB1 SB2 SB3 SB4 SB5 SB6



Endo Cleaning Kit

E3 E3D E4 E4D E5 E5D



Breaking File Removing Kit

E14 E15 E6 E7 E12D



Shoulder Preparation Kit

G20 G21 G30 G31 G32 G33



Retro Endo Kit

P20 E10 E10D E11 E11D

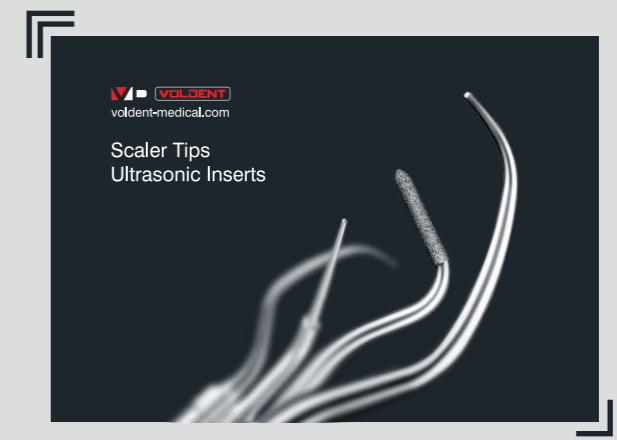


Endo Master Kit

E3D E15 E6 E6 E12D G8



See the complete models of ultrasonic scaler tips in this full catalogue of our **Ultrasonic Inserts** or visit our website: **voldent-medical.com**



# Vibra

Clinical  
Application  
All-rounder



## 4800-5200Hz sonic vibration Real elliptical vibration Gentle and soft treatment

VOLDENT Vibra provides the true wide elliptical strokes vibration trajectory, minimize the development of heat and noise, brings a comfortable and gentle treatment experience.

4800-5200Hz high frequency vibration, maximum 240  $\mu\text{m}$  amplitude, powerful and precise operation is more convenient.

In addition, as the handpiece operates with a low application pressure, tooth tissue is protected, and the treatment is more precise. VOLDENT Vibra is particularly suitable for pain-sensitive patients.

### Vibra 2

- Fiber Optic light illumination
- 3 adjustable power gears suitable for any indications
- MILTiflex LED quick coupling type
- Attached with 3 tips: GK1, GK2, GK3

output levels	Amplitude	Frequency	Volume	Indications
Level 1	120 $\mu\text{m}$	6000 Hz	61 dB (A)	Fine finishing and particularly delicate work
Level 2	160 $\mu\text{m}$	6000 Hz	69 dB (A)	Preparation and plaque removal
Level 3	240 $\mu\text{m}$	6000 Hz	71 dB (A)	Aggressive preparation and plaque removal



### Vibra 15

- MILTiflex quick coupling type
- Attached with 3 tips: GK1, GK2, GK3



### Vibra 1

- Midwest 4-holes connector
- Attached with 3 tips: GK1, GK2, GK3



VOLDENT

# Vibra

Clinical Application All-rounder



Supragingival Scaling



Subgingival Scaling



Finishing Trimming Polishing



Minimally Invasive Caries Therapy



Restorative



Prosthetics and Inlays



**Versatile  
Therapy  
Applications**

**Efficiency  
And High  
Performance**

The extensive tip selection of VOLDENT Vibra system allows you to always have a correct choice for your various clinical needs.

Choose your personal assortment of tips and expand it as your need.

The wide range of use options offered by VOLDENT Vibra will soon make it to be one of your most-used instruments.

**VOLDENT**

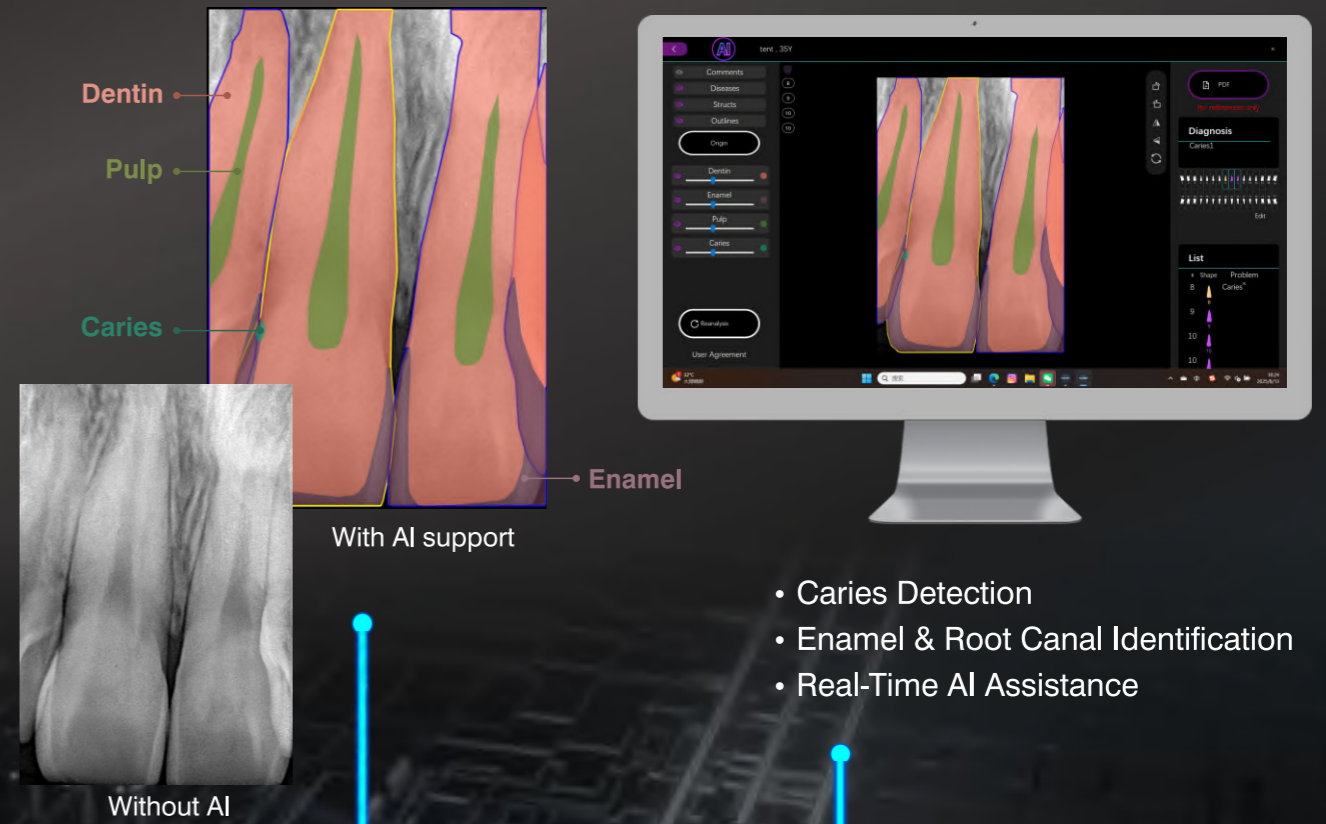
NEW

# DENTAL SENSORS

## Digital Intraoral X-Ray Sensor

### AI Inside Smarter Imaging Starts Here

Empowered by AI, our X-Ray Sensor brings intelligent support to your daily diagnostics. With real-time analysis, the system automatically identifies key dental structures — such as enamel, root canal fillings, and caries — providing dentists with instant insights for faster, more accurate assessments.



- Caries Detection
- Enamel & Root Canal Identification
- Real-Time AI Assistance

# Direct Conversion Intraoral Sensor

Smarter · Faster · Sharper

## 16-bit Dynamic Range, Zero-Noise Imaging

Precisely controlled threshold voltage filters out invalid signals, achieving a truly high signal-to-noise ratio and wide dynamic response

## Sharper Image Quality

With direct conversion technology, X-ray signals are captured without loss, delivering sharper details and stronger support for accurate diagnosis.



## Energy Discrimination Enabled: Ushering in a New Era of Color Imaging

Not only distinguishes X-ray intensity, but also identifies energy differences — enabling subtraction imaging and color CT to enhance clinical insight.

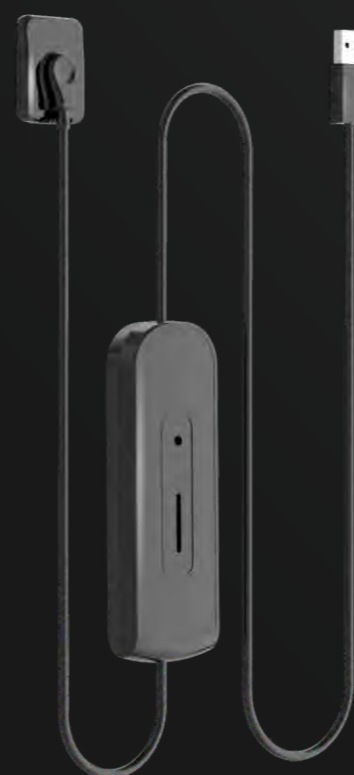
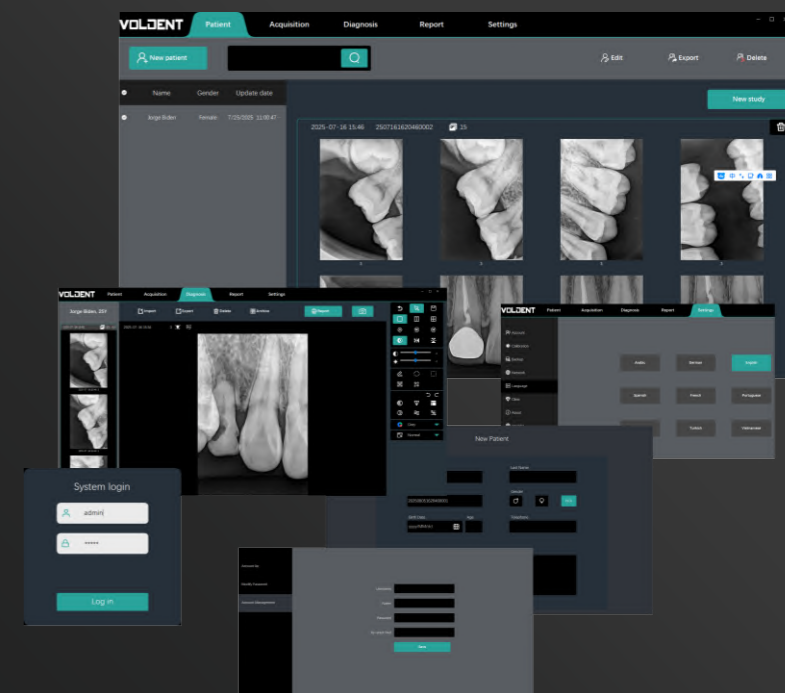
## Moisture-Resistant and Shockproof: Built for Complex Clinical Environments

structure protects against humidity, while the shock-resistant design ensures long-term stability and extended device lifespan

# Exceptional Design for Precision and Comfort in Every Use

Smart Software, Easy to Use

- One-click installation for quick setup
- Automatic image optimization to simplify workflow
- Built-in image processing tools to handle diverse clinical scenarios with ease



## Specification

Model	VD Sensor R1	VD Sensor R1.5
Specifications	Size 1	Size 1.5
Technology	Direct Conversione	Direct Conversione
Dynamic Range	16bits	16bits
Actual Resolution	12~14lp/mm	12~14lp/mm
Theoretical Resolution	20~25lp/mm	20~25lp/mm
Imaging Area	20*30mm <sup>2</sup>	25*30mm <sup>2</sup>
Dimensions	26.5*41.3 mm <sup>2</sup>	31.5*41.3 mm <sup>2</sup>
Thickness	6mm	6mm
Cable Length	3m ( Extendable )	3m ( Extendable )
Support System	Windows 7,8,10,11	Windows 7,8,10,11
Supported Languages	Arabic/Spanish/Russian/German/French/Turkish/English/Portuguese/Vietnamese	

**VOLDENT**

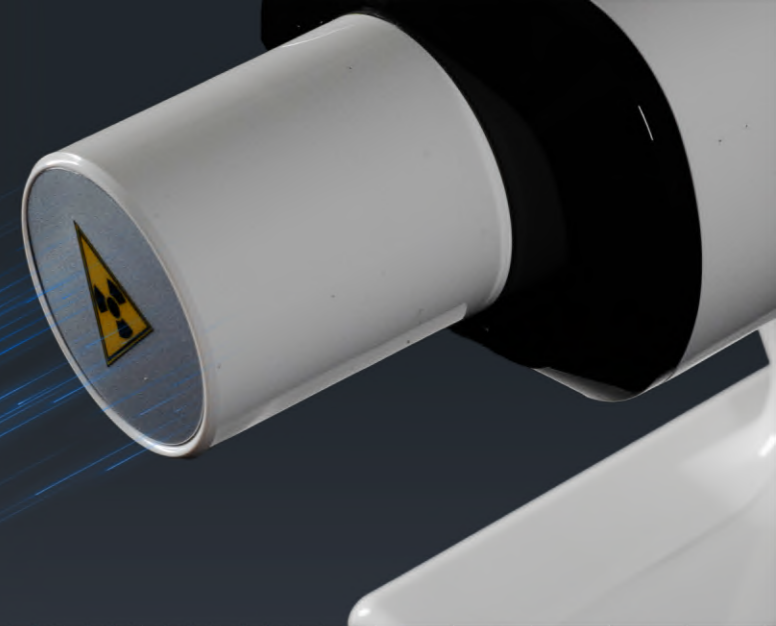
# Dental X-Ray Unit

## RAY X1



**Low Radiation**  
**Clear Imaging**  
**Reliable Performance.**

**Precise Imaging**  
**For Oral Health.**



### Small Size

Small size and compact design ensures ergonomic portability and placement, adaptable to diverse diagnostic and treatment settings.



### Ultra-long Running Time

One charge supports 500 exposures (tested under standard conditions), accommodating routine clinical workloads.



### Dual Cone Configuration

The short cone offers enhanced portability and ease of positioning, while the long cone provides improved beam collimation and geometric accuracy for high-precision imaging. This dual-cone design ensures flexibility, image clarity, and optimized performance across various dental diagnostic needs.

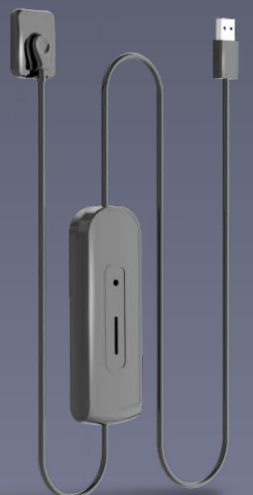


### High-Definition Imaging

High-frequency inverter technology delivers DC high-voltage output, securing clear imaging and enriched detail definition.

### Multi-Modal Compatibility

Film, image plate scanners and digital sensors are all compatible, addressing diverse clinical requirements.



# X-Ray

## MC Ray II

a smart digital dental image solution

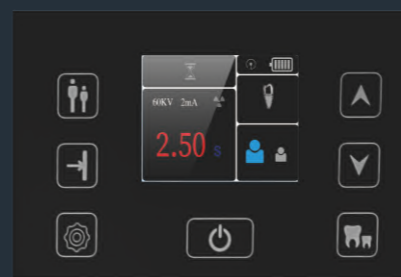


### 0.4mm focus to get high definition images

High-voltage generator with 0.4mm focus, high-definition imaging, enjoy top quality

### High frequency DC technology

Ultra-low radiation, the exposure dose is reduced by more than 30% compared with the standard generator, maximizing effective rays and greatly reducing the radiation intensity



### Ergonomic design

Shoot different teeth, fine-tune the shooting time, and achieve personalized and precise control

### High capacity lithium battery

950 mAh ultra high capacity battery, battery can be replaced, low cost of use

### Multiple shooting methods

Handheld shooting



## Specification

Tube Voltage: 60KV	Focus: 0.4mm
Highest Voltage: 70KV	Anode Target Angle: 12°
Tube Current: 2mA	Total Filtration: 1.0mmAl
Exposure Time: 0.01~1S	Battery Capacity: 950mAh



# V-Ray

## V-Ray

Handheld Portable X-ray



## V-Ray

Long battery life  
Ergonomic design  
Smart camera angle assistance



## Specification

Tube voltage:	70kv ± 10%
Tube current:	2ma + 20%
Input voltage:	100v-240v
Frequency:	50hz-60hz
X-tube:	canon(toshiba)
Anode angle:	12.5°
Focus:	0.4mm
Exposure timer range:	0.04s-2.0s
Leak emissivity:	1 meter 0.25mg/h
Machine weight:	1.9kg
Relative humidity:	30%rh-75%rh
Battery:	2500mAh

